

THE HOOSIER NEWSETTE



ALPHA EPSILON STATE INDIANA

MARCH 2013 VOLUME 59 NUMBER 3

International president visits Indiana

You are cordially invited...

... to be part of the Alpha Epsilon State Convention in Fort Wayne in April.
... to enjoy the fruits of labor of those busy CC3 members who have made plans for optional Friday tours.
... to avail yourself of a Friday evening workshop that offers stimulating ideas and opportunities.
... to relax and enjoy time for fellowship with members and guests in the Friday evening hospitality suite
... to welcome International President Dr. Beverly Helms to the Hoosier State. She is excited to participate in the 75th birthday celebration of our state organization. She also is excited to join the state planning team in preparation for the 2014 International Convention in Indianapolis.



... to attend Saturday morning's opening session before participating in stimulating workshops. Professional Growth Plan credits are readily available to count toward your personal educational goals.

... to join members from all corners of the state in celebration of the 75th birthday party of Alpha Epsilon State following a delicious lunch.

... to participate in significant decision-making discussions and opportunities during the general session. New leaders will be elected and standing rules amended. Your vote is important!

... to witness the procession of chapter presidents prior to the evening banquet and the installation of newly-elected state leaders. You are invited to a reception at the close of the evening.

... to remember those departed sisters during Sunday morning's Ceremony of Remembrance.

... to recognize women who have been honored during the past year for professional and personal achievements.

... to return to your chapter with renewed spirit and worth.

By Carol Grieser
1997-1999 State President

Celebrate in diamonds!

April 27, 2013 will be a special day for Alpha Epsilon State members as we celebrate our diamond birthday, 75 years of Indiana women working together to fulfill The Delta Kappa Gamma Society International's purposes.

Just as a diamond has many facets that shine and sparkle, so do Alpha Epsilon's many facets shine as members exemplify those seven Purposes. Personal and professional growth through scholarships, grants, and seminars are facets preparing members for distinctive service in many fields of education. The diamond facets shine brightly as members work toward education's legislative issues, serve on state and International committees, volunteer to help

early career educators, and show care and concern for Delta Kappa Gamma sisters in Indiana and educators throughout the world.

Celebrate the Past, Present and Future of Alpha Epsilon State at the convention birthday luncheon. On each table will be the symbols—a red rose, a book and a candle—and around the table will be members enjoying genuine spiritual fellowship.

Share in this special celebration—
COME TO THE STATE CONVENTION.



WHAT'S INSIDE?

Page 2President's Message, In Remembrance
Page 3 Professionally Speaking
Page 4State Convention Schedule

Page 5 State Convention Sessions
Page 6Your State Committees At Work
Page 7Your Network - Chapters And Members
Page 8 White Roses, Calendar



I want to invite every member to come to the state convention in Fort Wayne, April 26-28, to celebrate our 75th birthday. Seventy-five years ago our state organization was formed. A very special guest is coming to help us celebrate. Dr. Beverly Helms, our International President, will be our guest speaker at the birthday luncheon on Saturday. What an honor! Our past state presidents have been planning this luncheon for quite some time. On Sunday, we will honor those Alpha Epsilon State members who are "Women of Distinction."

If you know a member who has received an award or promotion or who is an officer of another organization, please email me her name and the award she has received so that we can honor her Sunday morning. I will need this information by **March 15th**. We will also honor our scholarship and grant recipients that morning. This is a state convention you won't want to miss!

Please notice the proposed standing rules enclosed in this newsletter. One of the proposed amendments is an increase in state dues. There is a special voting procedure for an increase in dues. There must be a two-thirds vote for this increase to happen. This proposed standing rule will be discussed at the convention. Each chapter president or her official representative (who must be present) shall be entitled to cast one vote for each five active or reserve members. The vote of the chapter may be divided. Please let your chapter president know how you feel about the increase. She or her official representative will vote accordingly, using this information and any information from the discussion at the convention. It is important that your chapter representative hear the discussion of the enclosed amendments.

Mary Lee Makinen, our Northeast Regional Director, would like to recognize a member from each state at the Northeast Regional Conference who exemplifies with action our International theme, "Sharing Our Vision – Strengthening Our Society." She would like for that member to be in attendance at the Northeast Regional in Portland, Maine on July 24- 27 to receive the award. If you know a member who shares our vision and strengthens our Society, please email me by May 1 her name and why you feel she should get this award. The Executive Committee will review the suggested names and determine whose name we will submit from Indiana to receive this unique award. Also each state is asked to request its members and chapters to donate items for early career educators. These will be collected at the luncheon and placed within the table arrangements. If you or your chapter have items you would like to donate, please let me know the items by April 30th.

Lastly, it is with great sorrow that we say goodbye to a dear, dedicated member. Holly Kirkpatrick, our state corresponding secretary, passed away on Sunday, November 25th, in her home. I attended a special Memorial Service for her on December 21st in Kokomo. She was an outstanding educator and a dependable member of Chi Chapter. She will be missed by all.

Darlene Trusty



Embracing Our Vision – Designing Our Future by
Teaching, Leading, Caring from the Heart for DKG

In remembrance



State Corresponding Secretary Holly Kirkpatrick passed away in late November. She will be remembered for her gentle demeanor as she fulfilled her responsibilities at the state level. She served on the state program and personnel committees, was site chairman for the 2002 Committee/Chapter Officer Training North, and chaired the 2006 state conference.

Chi Chapter members will remember Holly for her positive leadership and creative abilities when serving as corresponding secretary, vice president, president and treasurer.

A teacher of ESL students at Sycamore School in Kokomo, Holly created an atmosphere of acceptance for her students—those without a speaking knowledge of English, the learning disabled and the impoverished. In 2005 Holly was recipient of the Presidents' Award bestowed by the P. Moss Buckley Society in recognition of educators making a significant contribution to the betterment of children.

THE HOOSIER NEWSLETTE
USPS 025-622
Publication of the
ALPHA EPSILON STATE
Organization
THE DELTA KAPPA GAMMA
SOCIETY INTERNATIONAL
HENRIETTA T. SCHAEFER,
EDITOR
Logansport, Indiana 46947
Published quarterly
September, December, March,
and June
at Alpha Epsilon State
1020 Henry Street
Huntington, IN 46750
Periodical postage paid
at Huntington, IN 46750
and additional mailing offices
under Act of March 3, 1879
Annual subscription included in
state dues paid to
The Delta Kappa Gamma Society
International.
POSTMASTER: Send address
changes to:
THE HOOSIER NEWSLETTE
Mrs. Sarabeth Marcinko, Treasurer
6778 N US Hwy. 41
Bloomington, IN 47832-8041

PROFESSIONALLY SPEAKING . . .

Nominations Committee presents slate



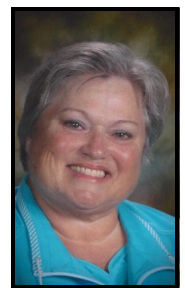
Lois Vogel, candidate for State President, served at the state level as 1st and 2nd vice president and as research chairman. As a member of Mu Chapter, Lois served as president, parliamentarian, corresponding secretary, and chairman of finance and communications. She teaches kindergarten in the South Ripley School Corporation.



Jo Ann Manes is the nominee for State 1st Vice President. She previously served as state 2nd vice president, parliamentarian and chairman of the finance and rules committees. Jo Ann served Beta Delta Chapter as president, treasurer, and communications chairman. Jo Ann was a primary teacher for 26 years, then served as a media specialist in the Hammond schools for six years.



Sherry Watkins, nominee for State 2nd Vice President, has been actively involved at both state and chapter levels. She currently is chairman of the state rules committee, previously having been chairman of professional affairs, legislation, and international projects. She served as Beta Chapter president and chairman of CC8.



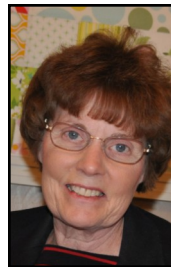
Jo Jones, Mu Chapter, is the nominee for State Secretary. She currently is state recording secretary and previously chaired state membership, research and scholarship committees. Jo teaches middle school English as well as high school/college dual credit classes for the Jac-Cen-Del Corporation.



Sharon Herr is the Northeast representative (2013-2017) on the nominations/personnel committee. She has served on the state rules committee, is past president of Chi Chapter, and taught in the Kokomo schools as a guidance counselor and classroom teacher in special education.



Delta member Janice Redenbarger (2013-2017) is the nominee to represent the Southwest area of the state on the nominations/personnel committee. She has been chairman of the state special projects committee, served twice as CC 10 chairman, and has been the chapter president. She taught English and journalism at Clay City High School.



Barbara Shirden, Kappa Chapter, has been nominated to complete the term of the Southeast representative. She will serve two years, 2013-2015. Barbara is a past president of Kappa Chapter. She taught special education in the Richmond School Corporation.

Science teacher awarded mini-grant



Katie Weyer, Alpha Phi Chapter, has received a \$500 mini-grant to purchase an iPad for use in the classroom, allowing students instant access to technology, apps, videos, and educational games. Students may access science websites to perform and complete virtual experiments not available in the classroom. Katie is a middle school science teacher at Tell City Jr.-Sr. High School.

Educational Foundation Application Schedule

May 1 and September 1

Cornetet Individual Professional Development

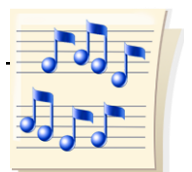
November 1

Cornetet Professional Development Seminar

Additional information and applications available at dkgef.org



Join the state convention chorus on Saturday evening, April 27. "Why We Sing" by Greg Gilpin is a two-part song. Contact Judith Hancock at hancpicc@airbaud.net.



**SHARING OUR VISION—STRENGTHENING OUR SOCIETY
BY TEACHING, LEADING, CARING FROM THE HEART FOR DKG**

ALPHA EPSILON STATE CONVENTION 2013



Embracing Our Vision – Designing Our Future by
Teaching, Leading, Caring from the Heart for DKG

FRIDAY, APRIL 26

- 11:00 am Tour 1. Debrands Fine Chocolates
Tour 2. Lunch at the Joseph Decuis
Restaurant, Roanoke
- Your choice Tour 3. Self-guided Walking Tour
7:05 pm Tour 4. Tin Caps Baseball Game for Guests
- 3:00-10:00 pm REGISTRATION
7:00-10:00 pm Hospitality Suite Open
7:00 pm State Officers & Committee Chairmen
Dinner Meeting
- 7:15-8:05 pm Professional/Personal/Educational Sessions

SATURDAY, APRIL 27

- 6:00am-12noon REGISTRATION
7:00-8:45 am Executive Board Breakfast & Meeting for
all Chapter Presidents & Council Chairmen
- 9:00-9:45 am Opening Session
- 10:00-10:50 am Professional/Personal/Educational Sessions
11:00-11:50 am Professional/Personal/Educational Sessions
- 12:15-2:15 pm Birthday Luncheon
2:30-3:45 pm General Session
- 4:00-5:00 pm Installation Practice
4:00-5:15 pm Chorus Practice
4:30-5:00 pm Chapter Presidents Processional Rehearsal
- 6:30-7:00 pm Procession of Chapter Presidents
7:00-10:00 pm Presidents & Founders Banquet
Installation of State Officers

*All are invited to attend the reception immediately
following the banquet*

SUNDAY, APRIL 28

- 8:30-9:15 am Ceremony of Remembrance
- 9:30-11:00 am Honors Breakfast



**Professional certification
available**

Put that DKG membership to work to achieve those Professional Growth Plan goals. If PGP points are part of your current educational plan, decide now to attend the 2013 state convention. Not only does the state convention provide the fun of seeing DKG sisters but also offers stimulating workshops providing those necessary PGPs.

The procedure is simple: choose from the list of presentations available; sign in at the presentation site; later go to the designated location for certification of attendance and signature on the Certificate of Attendance.

The certificate may be found in the convention program booklet. Add it to your portfolio for review by your administration. This opportunity is one more benefit to membership in DKG!

Reminders!

- Convention registration deadline is March 29 — see the December 2012 issue of *The Hoosier Newsette*
- Room reservations should be made by April 10 — see the December 2012 issue of *The Hoosier Newsette*
- Tour registration is due by April 15 and guests are welcome to join the tours

From the archives...

“Today we honor our past, but ‘today is not yesterday.’ Change is a law of life which teaches that he who will not find and apply solutions for perceived problems must expect to experience new evils. Alpha Epsilon State should explore current needs of education and of women educators in Indiana. Having done this, it must focus on a vital need that is in harmony with the purposes of the Society and move toward the solution of the problem.”

Edna McGuire Boyd,
50 Years of Alpha Epsilon State, 1938-1988

PROFESSIONAL/PERSONAL/EDUCATIONAL SESSIONS OFFERED AT 2013 STATE CONVEDNTION

FRIDAY, APRIL 26 SESSION A. 7:15 PM-8:05 PM

1. LEARNING HOW WE LEARN

Presenter: Darlene Bockelman, Alpha Zeta

Participants will be introduced to different learning styles and how they impact the way people teach. The presentation includes audience participation as well as a short slide presentation. Participants will recognize their own style of learning and how to implement strategies with learning styles in mind.

2. WRITING FREE VERSE POETRY

Presenter: Ann Meiring, Alpha Omicron

Have you written free verse poetry? This program encourages participants to try free verse poetry writing. Participants cooperatively will write a free verse poem. The information given can be applied to students in second grade and older as well as in your own personal writing. Handouts will be available.

SATURDAY, APRIL 27 SESSION B. 10:00 AM-10:50 AM

3. ACTIVE MENTORING: A WISDOM RELATIONSHIP

Presenter: Jamyce Curtis Banks, Omega

The presentation will combine lecture, discussion and activities to help participants understand mentoring as a reciprocal relationship. The presenter will help to increase awareness of current practice regarding mentoring (Research and Indiana specific). Practical mentoring tips and examples will be given. Participants will learn to utilize a planning guide for effective mentoring.

4. TEACHING BEGINNING READERS: ADD SOME COLOR WITH "SOUND EFFECTS"

Presenters: Ellen Dittmer/Lucy Wieland, Epsilon

Vowel sounds may be a mystery to beginning and struggling readers. Research shows they don't see or hear vowels in words. "Sound Effects" offers teachers a simple way to teach about letters, sounds and making words. A color wheel "shows" and "tells" long and short vowel sounds. Participants will learn how students can blend sounds and read words by combining consonant cards and color symbols. This unique program engages students and helps them meet Kindergarten-First Grade Common Core Standards.

5. RETRACING ANNE FRANK'S FOOTSTEPS

Presenter: Michelle Ball, Alpha Zeta

In the summer of 2010, after receiving a Teacher Creativity Fellowship grant from the Lilly Endowment Fund in Indianapolis, Michelle spent seven weeks in Europe retracing Anne Frank's footsteps. This presentation is the history of Anne Frank's life from 1929-1945 as well as factors that make the Holocaust a unique genocide and distinct historical event.

6. SYMBOLS OF THE NATION

Presenter: Daniel Johns, Executive Director of the Quayle Vice Presidential Learning Center

His presentation will include the following: history and symbolism of the flag; eagle vs. the turkey; Great Seal of the United States; origin of Uncle Sam; and story of the Statue of Liberty. (State Academic Standards 1.13) This program is of interest to adults as well as students in the classroom.

SESSION C. 11:00 AM-11:50 AM

7. ZIMBABWE: A JOURNEY OF DISCOVERY

Presenter: Lynne Buckley-Noble, Theta

Africa University is located in Mutare, Zimbabwe.

Founded in 1992, its graduates work to provide leadership on the African continent and around the world. Poverty and suffering are everywhere yet the people show strength and faith in all they do. Journey with me as I recap my passage through this amazing country.

8. IDEAS FOR STRUGGLING CHAPTERS

Presenter: Jo Ann Manes, Beta Delta

This session will address issues affecting struggling chapters. Ideas and workable solutions will be discussed in a positive focus. There will be a sharing time for those attending, including an opportunity to brainstorm ways to find a solution for their particular situation.

9. RETRACING ANNE FRANK'S FOOTSTEPS

Presenter: Michelle Ball

Repeat session of #5 above.

10. INDIANA EDUCATIONAL LEGISLATIVE TRENDS

Presenter: Veronica (Roni) Embry, Beta

Ms. Embry is Public Education Advocacy Coordinator for ISTA, trains staff in interest-based problem solving for NEA, and is state legislative chairman. This informative session focuses on Indiana educational legislative trends.

YOUR STATE COMMITTEES AT WORK...

Mentoring beginning teachers

At the International Convention last July, S.E.E. or Supporting Early-career Educators, became the second International project of The Delta Kappa Gamma Society International.

Why is this project needed? Fewer women are entering the teaching profession and making a long term commitment to stay until retirement. Many of the new teachers hired leave within the first five years. They are often discouraged and burned out. Through the S.E.E. Project, members and chapters are encouraged to give support to those novice teachers.

- Brainstorm with your chapter members the ways that you can help newer teachers in your community
- Invite newer teachers to a meeting and have them relate how they might be supported
- Visit neighborhood schools and volunteer to be a guest reader or tutor
- Compile a list of new teachers in your community and prepare gift bags or welcome baskets
- Invite early-career educators to a program that would be of interest to them
- Offer help in designing bulletin boards or lesson plans

Chapters should begin to keep a record of the ways members contribute. On the 2014 reports, each chapter will be asked to report the number of volunteer hours and amount of money spent helping these newer teachers.

2013-2014 budget presented

The Finance Committee met in January to finalize the proposed budget to be presented at the April state convention. The committee worked diligently to find areas where budget reduction was a possibility. Amendments to state standing rules may affect the proposed budget. Members at the state convention will be given an opportunity to discuss and vote on amendment proposals affecting the budget.

Take pride in your chapter

As spring approaches, chapters are looking for new members. Be proud of your chapter. Share your feelings of fellowship and chapter activities with prospective candidates. What does your chapter offer that helps the generations of X-ers, Next-ers? Besides mentoring the younger teachers, DKG can offer financial support for graduate studies, assistance for National Board Certification, leadership training, financial support for school projects, and service to the community, the state, and the world.

At the state convention, come to the Saturday workshop, "Ideas for Struggling Chapters," to share and discuss workable chapter solutions. Create a spring bouquet of budding initiates and nourishing chapter members.

Fall Arts Retreat

When? November 1-2, 2013

Where? Shiloh Park Recreation & Conference Center, Marion

Why? Relaxation and fellowship with DKG sisters

Who? Members and non-members

Activities begin on Friday evening and conclude on Saturday afternoon.

Mark Your Calendar



*Fun Crafts Singing
Theater Food*

It's not too soon to mark your calendar. F.A.R. registration and accommodations will be featured in the next issue of *The Hoosier Newsette*.

YOUR NETWORK — CHAPTERS AND MEMBERS



CC 8 honored 40-year member Mary Jane Kass and 25-year member Linda Lander. They are shown here with Council 8 Chairman Betty Flynn. All three are members of Beta Gamma Chapter.



Alpha Chapter held a stellar initiation for Jan Brand, Bernadette de Leon, Judy Morran, Sue Spichert, Evelyn Niemeyer, and Clara Wyrick.



Denise Selm, Kappa, is Teacher of the Year for Richmond High School. She teaches business and technology classes at RHS and office administration classes at Ivy Tech Community College.

Mary Davis, Kappa Chapter, earned her D.S.S. degree (Doctor of Sacred Studies) from Christian Life School of Theology.



Kathy Dowling, Beta Upsilon member and retired from the Greenfield-Central School Corporation, was elected to the local school board.

Art teacher Janice Cole, Alpha Alpha Chapter past president, has received the Employee Recognition Award from the Southwest Parke School Corporation. She “loves to see the ‘light go on’ as a student comes to see the power of problem-solving through art.”



Beta members Roni Embry, Nancy Goldfarb, Sherry Watkins, Ruth Simmons, Nancy Hoff, and Julia Price surround Glenda Ritz, Superintendent of Public Instruction for Indiana.

Paula Barancyk, Alpha Omega, was selected as 2012-2013 Crown Point High School Teacher of the Year. She teaches Advanced Placement classes of U.S. History and Human Geography.

Ceremonial supplies

As chapters have dissolved and turned in their materials, the state has accumulated a large collection of brass candlesticks, bowls and platters, table runners and copies of Our Heritage, Volumes 1-2. The candlesticks are an assortment of sizes from large ones to the mini



candlesticks used by each initiate. Please look through the chapter initiation paraphernalia to see if anything needs replaced. Contact Carol Herzog, state executive secretary, for replacement and costs. She will bring the items to the April state convention if notified. She may be reached at carolherzog@cinergymetro.net or 260-356-3178.

**Alpha Epsilon State Indiana
The Delta Kappa Gamma Society International**

Sarabeth Marcinko, Treasurer
6778 N US Hwy. 41
Bloomington, IN 47832-8041

PERIODICALS
POSTAGE
PAID AT
KOKOMO IN

The Hoosier Newsette
Published quarterly by
Alpha Epsilon State Indiana



*The Delta Kappa Gamma Society
International
promotes professional and personal
growth of women educators and
excellence in education.*

Postmaster: Send address changes to S. Marcinko, 6778 N US Hwy 41, Bloomington IN 47832-8041.

LOOK TO THE FUTURE
2013-2014

April 26-28, 2013
State Convention .. Fort Wayne

July 24-27, 2013
Northeast Regional Conference
..... Portland, ME

November 1-2, 2013
Fall Arts Retreat (FAR)
..... Marion

July 28-August 1, 2014
International Convention
..... Indianapolis

ATTENTION, CHAPTER PRESIDENTS
Report of the Death of a Member—
Form 6 should be prepared by the chapter president immediately upon the death of a member. A copy is sent to the International Executive Director, State President, State Treasurer, and State Membership Chairman. One copy is placed in the chapter files.

WHITE ROSES
One candle lights another.

<p>Alpha Anita Aldrich October 28, 2012 Bloomington</p> <p>Theta Mary E. Banes December 18, 2012 Las Vegas, NV</p> <p>Chi Holly Kirkpatrick November 25, 2012 Kokomo</p> <p>Alpha Beta Doris Armstrong January 8, 2013 Connersville</p> <p>Virginia Ewing December 2012 Peru</p> <p>Alpha Delta Elizabeth June Hart December 13, 2012 Washington</p> <p>Barbara Waggoner January 26, 2013 Elnora</p> <p>Alpha Zeta Doris McDonald October 5, 2012 Wabash</p> <p>Alpha Theta Sarah Frank November 4, 2012 Indianapolis</p>	<p>Alpha Psi Kathleen Cummins December 26, 2012 Clemons, NC</p> <p>Ophelia Weitzman December 26, 2012 Fort Wayne</p> <p>Beta Delta Betty Lundahl January 21, 2013 Highland</p> <p>Beta Omicron Elena Banks September 16, 2012 Malibu, CA</p> <p>Beta Phi Diane Hopper December 26, 2012 Brownsburg</p> <p>Judith Jackson (Davis) October 26, 2012 Plainfield</p> <p>Beta Psi Charlotte A. Pickett August 16, 2012 Brazil</p> <p>Gamma Mu Loretta Allen January 18, 2013 Logansport</p> <p>Gamma Omicron Rita Kruse May 16, 2012 Columbus</p>
---	--